



Arm-held, the wearable ultrasound



Esaote S.p.A.

International Activities: Via di Caciolle, 15 50127 Florence, Italy. Tel. +39 055 4229 1, Fax +39 055 4229 208, international.sales@esaote.com

Domestic Activities: Via A. Siffredi, 58 16153 Genoa, Italy. Tel. +39 010 6547 1, Fax +39 010 6547 275, info@esaote.com

FRANCE

Esaote France S.A.R.L.
ZA du Bel Air
10, rue de Témara, 78105 Saint Germain en Laye
Tel. +33 1 8204 8900, Fax +33 1 3061 7210
info@esaote.fr

BRASIL

Brasilian Direct Office
Rua Tomas Carvalhal, 711
04006-001 São Paulo SP
Tel. +55 11 2589 0533 Fax +55 11 2589 0527
leonardo.pili@esaote.com.br

GERMANY

Esaote Europe B.V. - Niederlassung Deutschland
Max-Planck-Straße 27a
50058 Köln
Tel. +49 2234 688 5632, Fax +49 2234 967 9628
info@esaote-piemedical.de
www.esaote-piemedical.de

ARGENTINA

Esaote Latinoamérica S.A.
San Martín 551, Cuerno 'C', Piso 8, (C1004AAK)
Buenos Aires
Tel. +54 11 4326 1832, Fax +54 11 4328 1245
info@esaote.com.ar

SPAIN

Esaote España S.A.
C/ Pont Reixat, 5
08960 Sant Just Desvern, Barcelona
Tel. +34 93 473 2090, Fax +34 93 473 2042
info@esaote.es

INDIA

Esaote Asia Pacific Diagnostic Private Limited
DLF IT Park, A- 44 E 45, Tower- C, Ground Floor,
Sector- 42, Noida, Uttar Pradesh, India
Pin Code: 201 301
Tel. +91 120 4732444, Fax +91 120 4750148
info@esaote.in

THE NETHERLANDS AND BELGIUM

Esaote Benelux B.V.
Philipsweg 1
6227 AJ Maastricht
Tel. +31 43 3824650, Fax +31 43 3824651
benelux@esaote.nl

HONG KONG AND FAR EAST

Esaote China Ltd
18/F, 135 Bonham Strand Trade Centre,
135 Bonham Strand, Sheung Wan, Hong Kong
Tel. +852 2545 8386, Fax +852 2543 3068
esaote@esaotechina.com

UK

Esaote UK
14, Cambridge Science Park
Milton Road, Cambridge, CB4 0FQ
Tel. +44 1223 424499, Fax +44 709 288 0231
infoUK@esaote.com

CHINA

Esaote Shenzhen Medical Equipment
Room 2608, Tower B
Beijing Global Trade Center
36 North Third Ring Road East,
Dongcheng District, 100013, Beijing
Tel. +86 010 58257766, Fax +86 010 52257760

NORTH AMERICA

Esaote North America
8000 Castleway Drive,
Indianapolis, IN 46250
Tel. +1 317 813 6000, Fax +1 317 813 6600
inquire@esaotesa.com

RUSSIAN FEDERATION AND CIS

Esaote S.p.A.
18 Leningradsky prospekt
Off. 5 and 6, Moscow 125040
Tel. +7 495 232 0205, Fax +7 495 232 1833
esaotemoscw@yandex.ru

833 091 4000 (UK Rev. 03)

www.esaote.com



In touch with Veterinary

- > Quick and Precise Animals Care: Imaging, Diagnosing, Storing, Printing
- > Ease of Use
- > Dedicated Simplified Interface
- > Full touch screen control

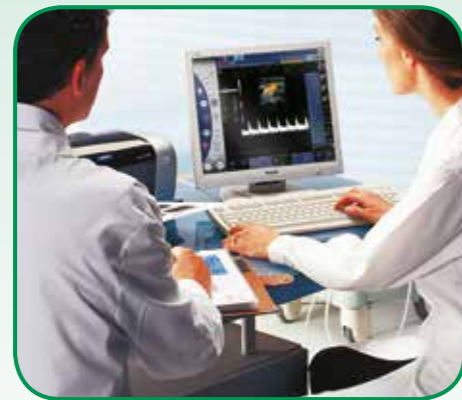
MyLabOne[™]VET

- > Enlarged Image Visualization
- > User-friendly Simplified Interface
- > Double level Touch Screen Interface
- > Customizable Clinical Protocols
- > Wireless networking for data storage and printing



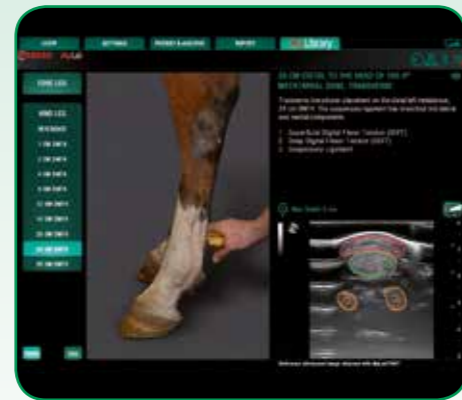
MyLabDesk

- > Image management made easy
- > Direct networking (Wireless, LAN)
- > Review, modify and examination print out (reports and images)
- > Data export and back-up: CD/DVD burning, e-mail, etc...



MyLibrary

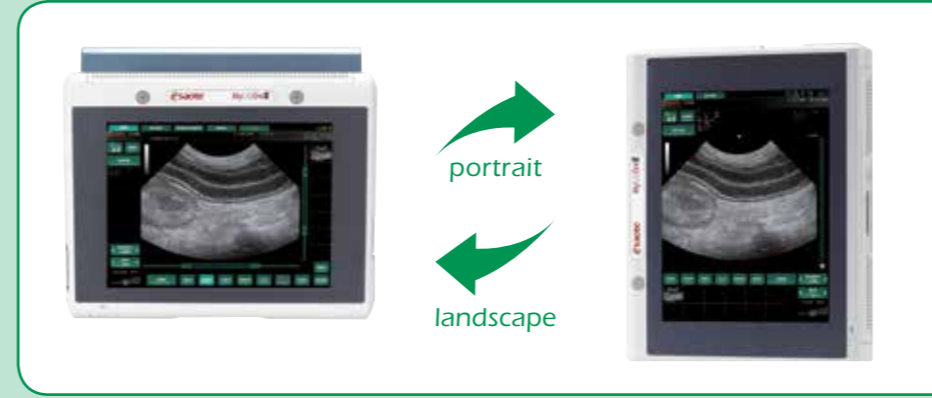
- > e-book reference for selected applications



High-end Vet Ultrasound in One small package



Very easy to clean due to the flush surface of the monitor.



Silicon cover to supplementary protect the system against shocks

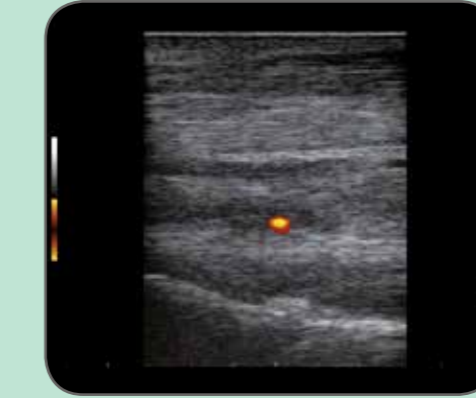
- Easy cleaning
- Protection cover
- Auto-orientation
- Arm-held solution



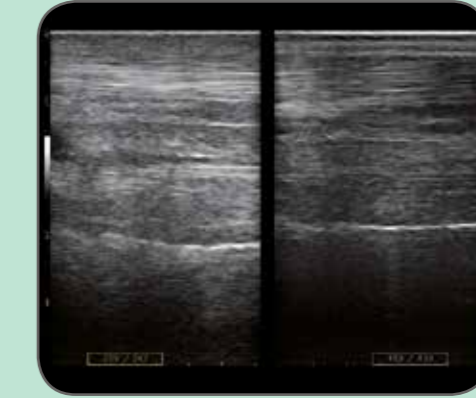
Customizable buttons on the handle and probe



MyLabOne[™]VET



Equine - old lesion vascularization in tendon



Equine - comparative study



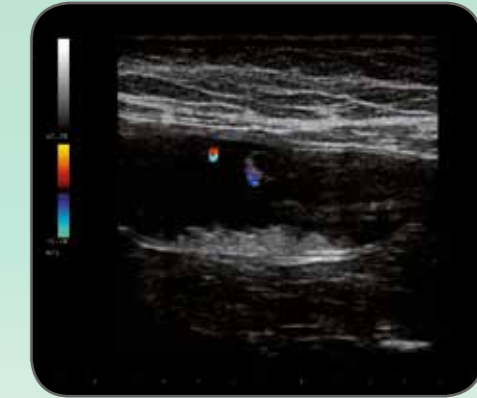
Equine - bone fracture



Canine - intestinal tract



Canine - vena cava inferior



Feline - polypoid cystitis



Equine - corpus luteum



Equine - foal heart



Bovine - calf head